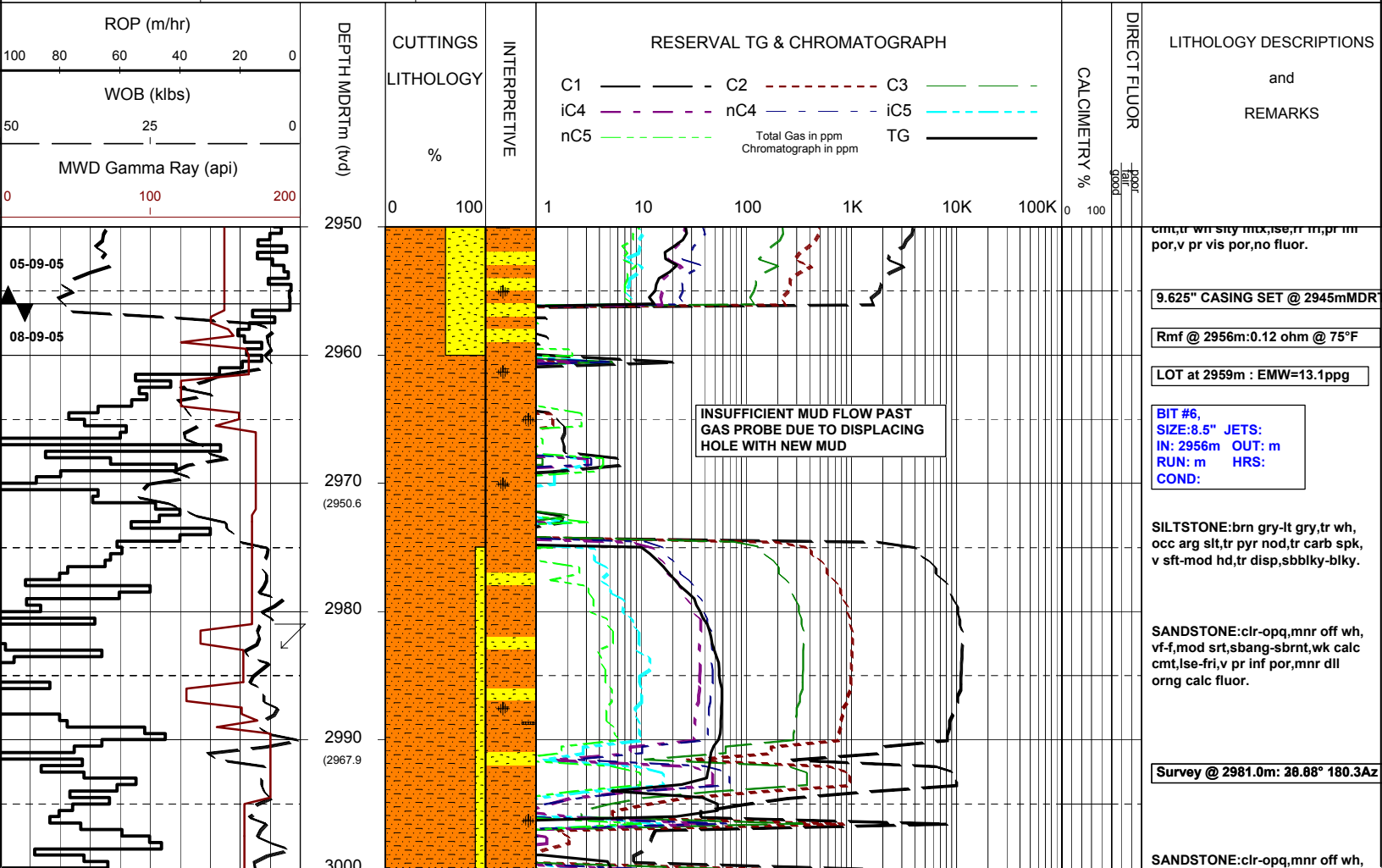
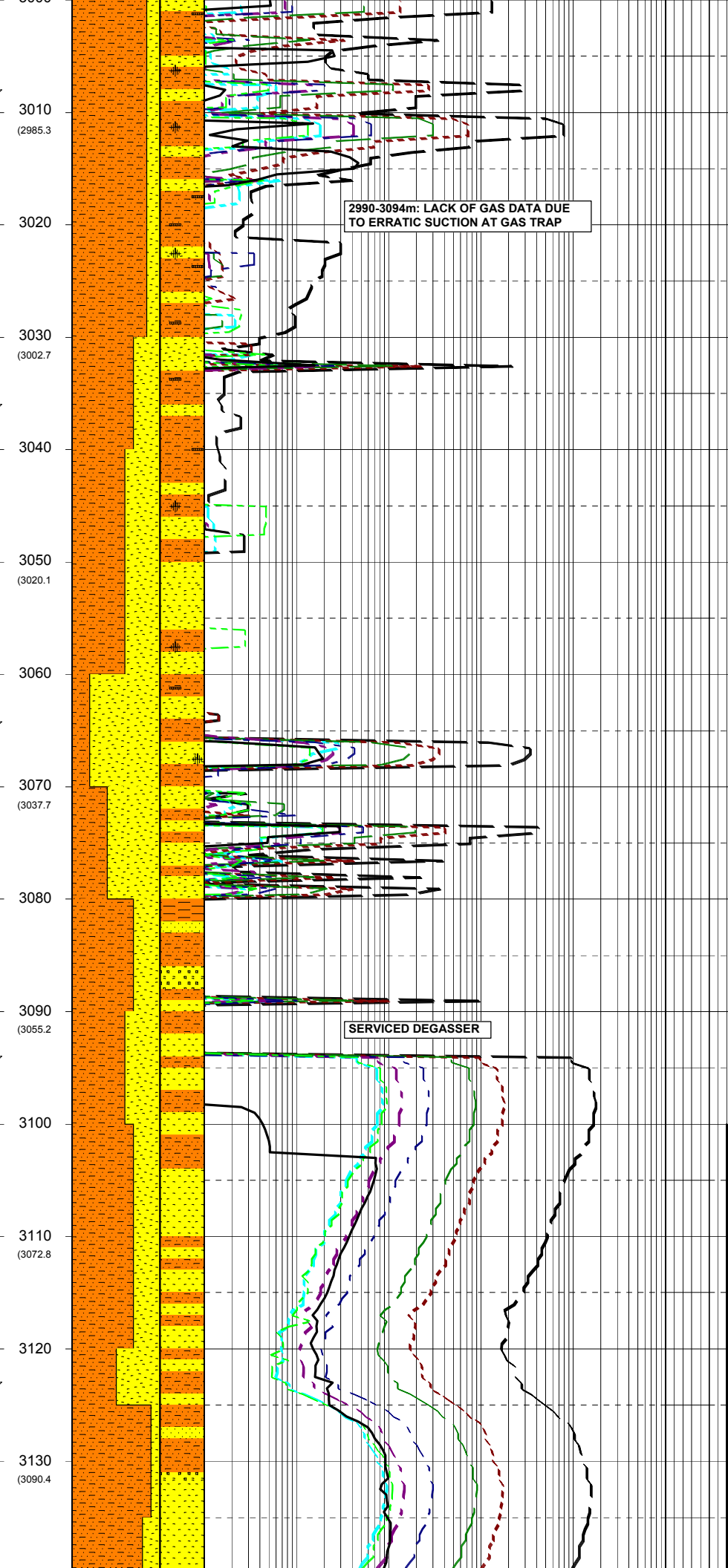
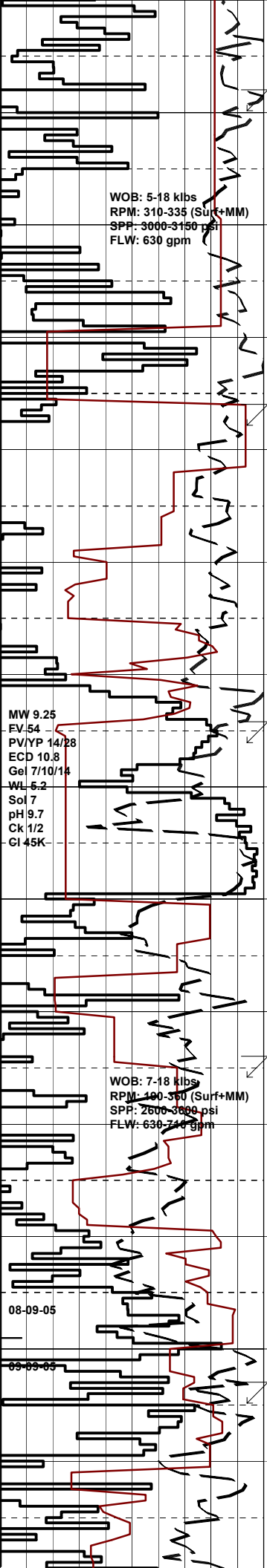


# MASTERLOG BASKER 2

GENERAL	POSITION	HOLE / CASING INFO	DATE / DEPTH	ENGINEERS
Country : AUSTRALIA	Latitude : 38°17'58.51"S	17 1/2" Hole to (mMDRT): 1006	Spud Date : 14-08-2005	D. ADDERLEY
Permit : VIC RL6	Longitude : 148°42'24.72"E	12 1/4" Hole to (mMDRT) :	Total Depth Date :	A. DUNN
Field : BASKER	UTM Co-ord X (m E): 649251.9	8 1/2" Hole to (mMDRT) :	Total Depth (mMDRT):	S. RAJA
Basin : GIPPSLAND	UTM Co-ord Y (m N): 5759566	30" Conductor @ (mMDRT) : 208	True Vertical Depth (mTVDSS):	P. RADY
Well Type : APPRAISAL	RT to MSL (m): 21.5	13 3/8" Shoe @ (mMDRT) : 1000	Log Scale : 1/ 500	
Rig Name : Ocean Patriot	RT to Sea Bed (m): 174	9 5/8" Shoe @ (mMDRT) :	Final Status :	

ABBREVIATIONS		LITHOLOGY LEGEND				ENGINEERING LEGEND	
MW Mud Weight	WOB Weight on Bit (klbs)	Marl	Quartzite	Siltstone	Rudists	Essai non concl	Mud loss
FV Funnel Viscosity	RPM Rotations Per Min	Clay, Sand Lime	ar. Sandstone	f to vf Sand f	Sponges	Aucun fluide re	
PV Plastic Viscosity	FLW Flow Rate (gpm)	do. Shale	bitum. Shale (b)	Fossils	Sporomorphs	TEST	← RFT
YP Yield Point	SPP Pump Pressure (psi)	ca. Shale	Claystone	Algae	Tigillites	Filtrat	← FIT
Gel Gel Strength	RR Re-Run Bit	sandy Shale	Fine SST	Lithic Fragment	Vertebrates	Deviation surge	DST
WL Water Loss	TG Trip Gas	si. Claystone	sa. Shale	Belemnits	Wood silicified	Mud gain	□ Cement
KCI Potassium Chloride	CG Connection Gas					Boue	
Cl Chlorides	BG Background Gas						
Incl Inclination	DGP Drilled Gas Peak						
Az Azimuth	MM Mud Motor						





Survey @ 3009.9m: 29.88° 180.0Az

SANDSTONE:clr-opq,mnr off wh, vf-f,mod srt,sbang-sbrnd,wk calc cmt,lse-fri,v pr inf por, mnr dll org calc fluor.

SILTSTONE:brn gry-lt gry,occ arg slit,tr pry nod,tr carb spks,tr arg mtx,tr disp,frm-mod hd, bkly-sbbkly.

SANDSTONE:clr-opq,v f-v crs, pr srt,ang-sbrnd,lse,fr-gd inf por.

Survey @ 3038.5m: 29.08° 178.9Az

SILTSTONE:brn gry-lt gry,occ arg slit,tr pry nod,tr carb spks,tr arg mtx,tr disp,frm-mod hd, bkly-sbbkly.

SANDSTONE:opq-clr,tr wh, v crs-f,pr srt,sbang-sbrnd,tr calc cmt,lse-fri,fr-gd inf por,mnr dll org calc fluor.

Survey @ 3066.6m: 28.66° 178.4Az

SILTSTONE:brn gry-lt gry,occ arg slit,tr pry nod,tr carb spks,tr arg mtx,tr disp,frm-mod hd, bkly-sbbkly.

SANDSTONE:opq-clr,tr wh, v crs-f,pr srt,sbang-sbrnd,tr calc cmt,lse-fri,fr-gd inf por,mnr dll org calc fluor.

SANDSTONE:clr-trnsi,vf-pred f,tr crs,mod srt,sbrnd-sbang,tr sil cmt,pr pyr nod,fri-occ mod hd, occ lse,prvis por,pr-fr inf por, no fluor.

SILTSTONE:brn-dk brn,lt gry,lt gry brn,tr aren i/p,com carb lams & frags,tr nod pyr,tr micmic,sft-frm, occ mod hd,sbbkly.

Survey @ 3095.3m: 28.69° 178.5Az

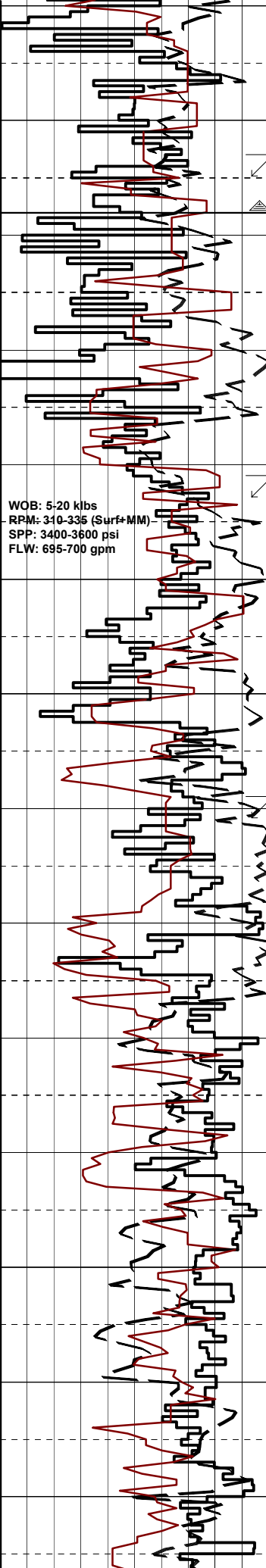
SANDSTONE:clr-trnsi,f-med,tr crs, pr-mod srt,sbrnd-sbang,tr sil cmt, tr-com wh-lt brn arg mtx,tr nod pyr,tr micmic,fri-occ mod hd,tr lse,v pr-pr vis por in f aggs, pr-fr inf por in loose component, tr fluor.

SILTSTONE:lt brn-brn,brn gry,lt gry i/p,aren,tr carb frags & lams,tr nod pyr,tr micmic,sft-frm,sbbkly-sbfiss.

FLUOR:3100m-3150m;Tr Tr dll lt grn,no cut no c/c,no r/r.

Survey @ 3123m: 28.01° 177Az

SANDSTONE:clr-trnsi,wh,opq,vf-f (aggs),tr crs (lse),pr srt,sbrnd-



3140  
3150 (3108.1)  
3160  
3170 (3125.8)  
3180  
3190 (3143.5)  
3200  
3210 (3161.4)  
3220  
3230 (3179.3)  
3240  
3250 (3197.2)  
3260  
3270 (3215.4)

CHANGED OUT DEGASSER PUMP RUBBER

WOB: 5-20 klbs  
RPM: 310-335 (Surf+MM)  
SPP: 3400-3600 psi  
FLW: 695-700 gpm

WOB: 12-20 klbs  
RPM: 310-335 (Surf+MM)

sbang, tr sil cmt, tr lt gry/lt brn argmtx, tr nod pyr tr carb spks, fri, pred lse, pr vis por in aggs, pr-fr inf porin lse component, tr fluor.

SILTSTONE: brn/dk brn, dk brn gry, aren grd vf SST i/p, grd to CARB SL i/p, tr carb lams & frags, sft frm, sbfiss-sbbiky.

Survey @ 3153.2m: 27.87° 176.2Az

Back ream to casing shoe

SILTSTONE: lt brn/brn, brn gry, aren i/p, tr carb lams & frags, frm, occ mod hd, sbfiss-sbbiky.

SANDSTONE: clr-trnsi, off wh, opq, f-crs, pr srt, sbang-sbrnd, com sil cmt, com wh-lbrn arg mtx, tr qtz ovghts, tr carb spks, fri, uncon i/p, com lse, pr vis por with aggs, pr-fr por assoc with lse grs, no fluor.

SILTSTONE: lt brn/brn, lt brn gry, aren, com carb lams & frags, tr pyr, sft frm, sbbiky.

Survey @ 3181.8m: 27.45° 174.9Az

SANDSTONE: clr-trnsi, opq, f-med, mod srt, sbrnd-sbang, tr-com sil cmt, com lt brn/wharg mtx, tr carb spks, tr pyr, fri, pred lse, pr vis por, pr-fr inf por, no fluor.

SILTSTONE: lt brn/brn, lt brn gry, aren, com carb lams & frags, rr pyr, sft frm, sbbiky.

SANDSTONE: clr-trnsi, f-crs, pr srt, sbrnd-sbang, tr dol & pyrtic sil cmt, tr lt brn arg mtx, tr carb spks, pred lse, occ fri aggs, pr vis por, pr-fr inf por, no fluor.

Survey @ 3210.1m: 26.65° 173.9Az

SANDSTONE: clr-trnsi, f-crs, pr srt, sbrnd-sbang, rr dol cmt, tr sil cmt, tr lt brn/off wh arg mtx, tr carb spks, pred lse, uncon-fri, pr vis por, pr-fr inf por, no fluor.

SILTSTONE: brn/pred dk brn, brn gry i/p, aren i/p, grd to CARB SLTST i/p, com carb spks & lams, sft, sbbiky-sbfiss.

Survey @ 3238.5m: 26.31° 172.3Az

SANDSTONE: clr-trnsi, opq, f-crs, pr srt, pred sbrnd-sbang, tr sil cmt, tr wh/lt brn arg mtx, tr carb spks, pred lse, tr uncon-fri aggs, pr vis por, fr inf por, tr fluor.

SILTSTONE: brn gry-lt gry, mntr gry blk, tr arg slit agg, tr carb spks, tr pyr nod, tr disse pyr, sft-mod hd, tr disp, sbbiky-blky.

SILTSTONE: brn gry-gry, mntr gry blk, tr off wh, tr arg slit agg, tr carb lams, tr carb spks, sft frm, tr disp, sbbiky-blky.

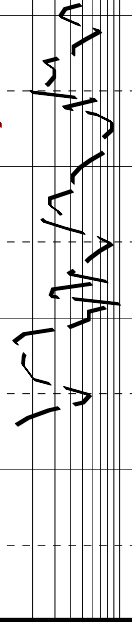
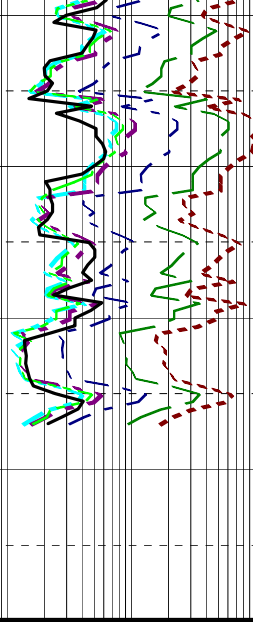
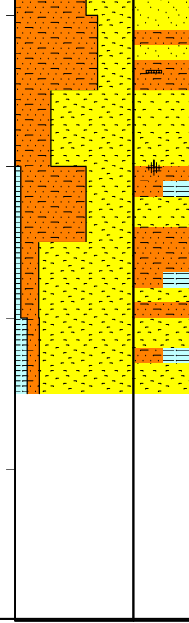
SILTSTONE: lt gry-brn gry, tr arg slit agg, tr calc, tr carb spks, tr pyr nod, tr disse pyr, v sft-mod hd, tr disp, sbbiky-blky.

Survey @ 3267.8m: 25.94° 171.7Az

SANDSTONE: clr-opq, vf-med, mod srt sbrnd-sbang, tr sil cmt

SPP: 3400-6500 psi  
FLW: 695-700 gpm

3280  
3290  
(3233.2)  
3300  
3310  
(3251.2)  
3320



tr wh/lt brn arg mtx, tr carb spks,  
pred lse, tr unconfs-fri aggs, pr  
vis por, pr inf por, tr fluor.

SILTSTONE: lt gry-brn gry, tr  
gry blk, tr off wh, tr arg sil agg,  
tr kaol mxt, tr carb lams, tr  
calc, tr carb spks, tr pyr nod,  
tr dissem pyr, tr disp, sbblky  
-biky.

SANDSTONE: clr-opq, vf-med,  
mod srt, sbrnd-sbang, tr sil cmt,  
tr wh/lt brn arg mtx, tr carb spks,  
tr pyr nod, pred lse, tr unconfs-  
fri aggs, pr vis por, pr inf por,  
tr fluor.

CLAYSTONE: wh, lt gry, kaol, tr f pyr,  
v sft-sft, amorph.

PULL OUT OF HOLE TO  
INVESTIGATE PRESSURE LOSS